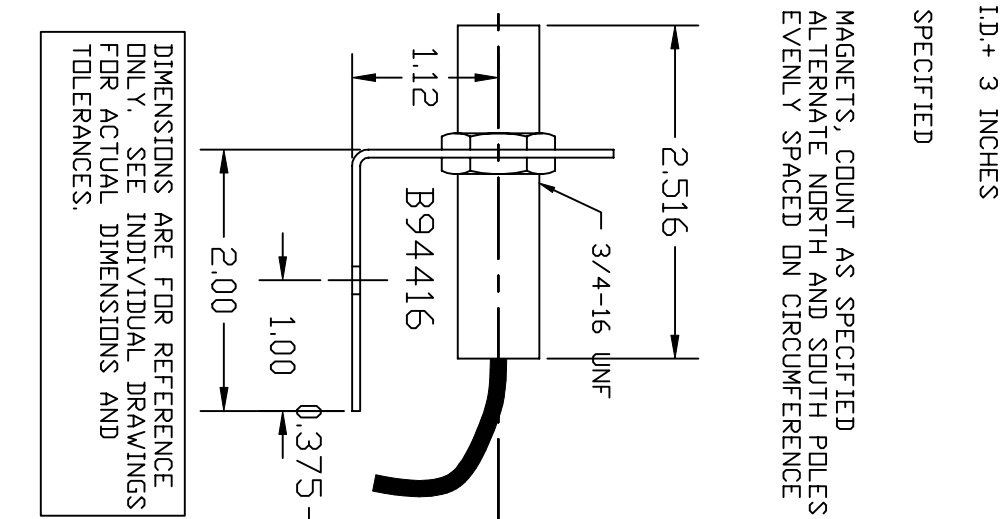


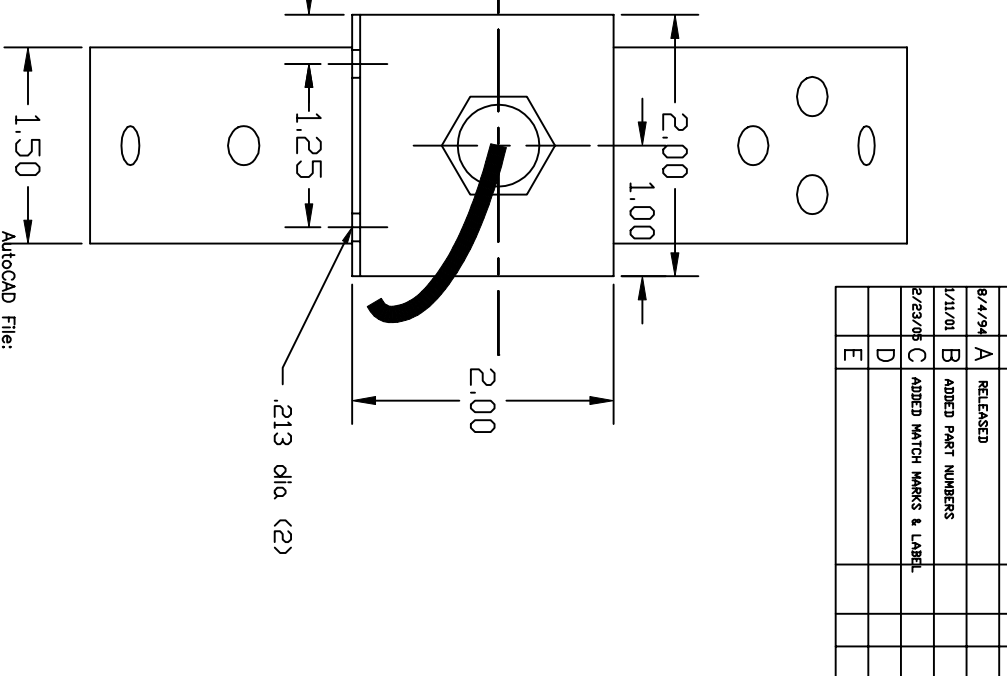
SPECIFY THE FOLLOWING DATA:

1. EXACT INSIDE DIAMETER
2. NUMBER OF MAGNETS (TWO MAGNETS GENERATE ONE PULSE)
3. MATERIAL- PVC STANDARD, ALUM AVAILABLE.



VERIFY THE FOLLOWING:

1. O.D. WILL BE I.D. + 3 INCHES CHECK FOR CLEARANCE FROM TRUCK BED/FRAME MEMBERS
2. PICKUP CLEARANCE MUST BE FROM 1/16 INCH TO 1/4 INCH.
3. MAXIMUM SPEED 3000 RPM



DATE	SYM	REVISION	AUTH	DR.	CK.
8/4/94	A	RELEASED			
1/11/01	B	ADDED PART NUMBERS			
2/23/05	C	ADDED MATCH MARKS & LABEL			
	D				
	E				

TOLERANCES		MICRO SYSTEMS DEVELOPMENT INC.	
INCHES		DAYTON, OHIO 45458	
DECIMAL	±0.01	MAT'L AND FINISH	SCALE
XXX	±0.005	PVC (ALUM OPT)	NTS
ANGULAR		DRAWN BY J. Butler	
±0.1	DEG	DATE	8/4/94
		SIZE	B
		DRAWING NUMBER	94415
		REV.	C
TITLE DRIVE SHAFT WRAPPER - FOOTAGE SENDER			
APPROVED BY			

Autocad File: